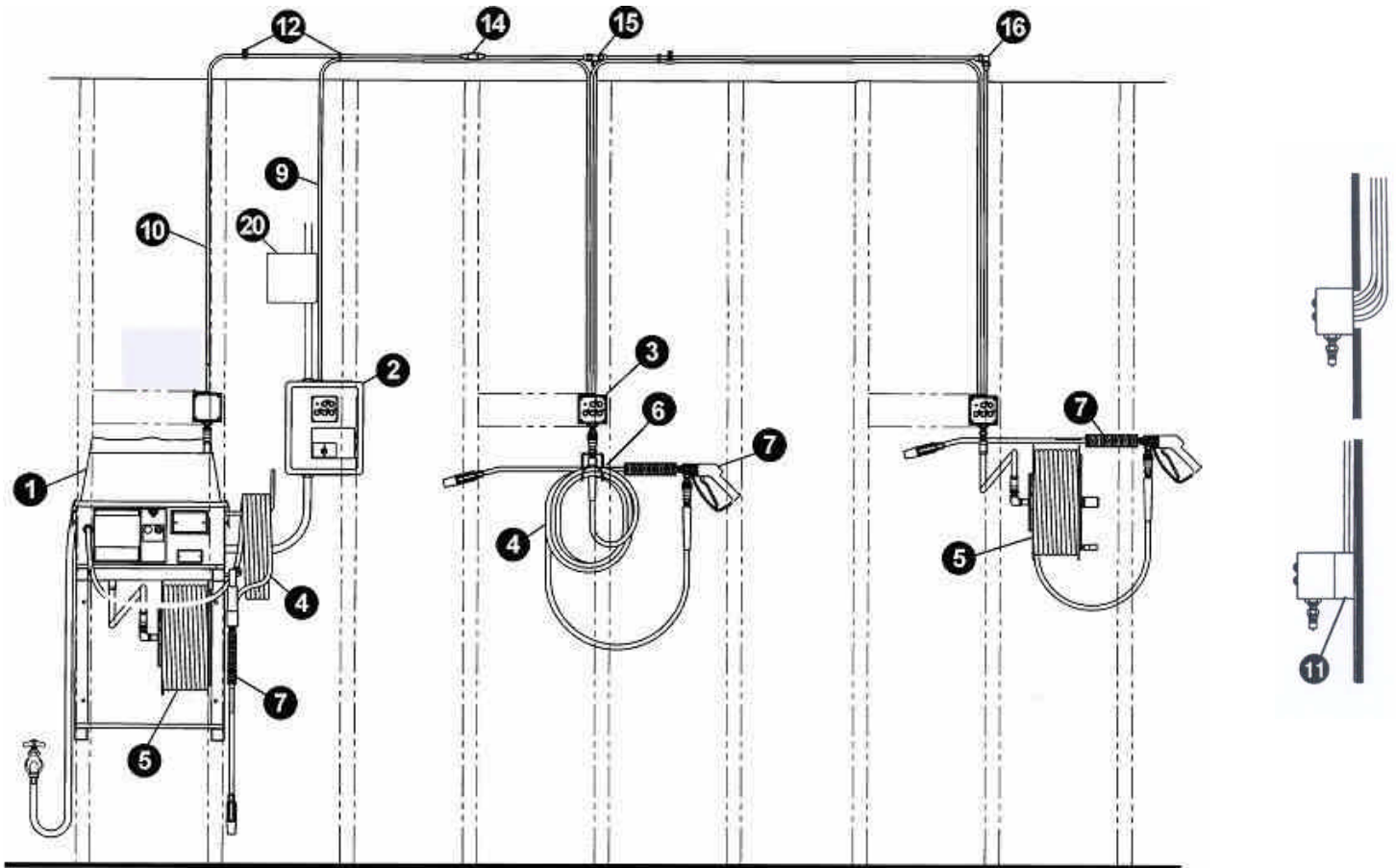


Central System Schematic



Schematic Drawing



Options



Master Control Panel
(see specification table)



Union Flare Fitting
Part No: 538785-45



Sill Faucet
(see specification table)



Tee Flare Fitting
Part No: 538775-45



Stainless Tubing 50' (15m) Coil
Part No: 541400-45



Remote Panel
(see specification table)



Elbow Flare Fitting
Part No: 539015-45



12 Conductor 18 Gauge Wire
Part No: 525295-45

Specification Table

		Part Number	Description	Qty	Wt. (lbs.)	Total Wt.	
1	Sage Machine Specs SRW	SRW- - - -	<i>See separate spec and price list for model or pricing details.</i>		175.0		
		Pres.	08	800 psi (55bar) - Variety of indoor and outdoor surfaces, remote networks			
			10	1000 psi (69bar) - Outdoor or stubborn areas			
		Chemical	0	Gravity, Soap & Sanitize - Two Solenoid valves for injection of two chemicals			
			1	Pump, Soap & Sanitize - Two Peristaltic pumps for injection of two chemicals			
			2	Gravity, Soap only - One Solenoid valve for injection of only one chemical			
			3	Pump, Soap only - One Peristaltic pump for injection of only one chemical			
		Power	1	115 Volt, 60 Hertz - GFI plug on 35 feet (10.7 meters) of cord			
			2	230 Volt, 50 Hertz - GFI on 35 feet (10.7 meters) of cord. Denote country or specific plug.			
			3	230 Volt, 60 Hertz - GFI plug on 35 feet (10.7 meters) of cord			
Options	Hose	03	30 feet (9 meters) high pressure Hose with Spray Gun assembly				
		05	50 feet (15 meters) high pressure Hose with Spray Gun assembly				
		07	75 feet (23 meters) high pressure Hose with Spray Gun assembly				
		10	100 feet (30 meters) high pressure Hose with Spray Gun assembly				
		N	No options				
		R	With Hose Reel, stainless steel. Available in any hose length, except 100 feet (30 meters).				
With a Remote Machine, you MUST select a Master Control Panel and appropriate Remote Panel(s).							
2	Master Control Panel	Master Control Panel	<i>Powers Machine and Remote Network. Allows power control and chemical selection from Remote Panels. Optional Key Lock switch allows only authorized personnel to ready machine and system.</i>				
		SR-0101-N	115 Volt, no options		16.4		
		SR-0102-N	230 Volt (50 and 60 Hertz), no options		16.4		
		SR-0101-L	115 Volt, Key Lock Master Power switch		16.4		
		SR-0102-L	230 Volt (50 and 60 Hertz), Key Lock Master Power switch		16.4		
3	Remote Panel Spec SR-02	Remote Panel	<i>Remote power & chemical selection, up to 10 Remote panels within 300 feet (91 meters) of Machine. Connect to Machine Manifold with stainless Tubing, and to Master Control Panel with 12 conductor Wire.</i>				
		SR-0201	Exposed wall mount panel		2.3		
		SR-0202-L	Exposed wall mount panel, locking stainless Cover		4.0		
4	Hose, High Pressure		<i>High pressure hose with 1/4" brass Quick Disconnect sockets at each end.</i>				
		533600-45	High pressure Hose, 30 feet (9 meters) long		4.2		
		536000-45	High pressure Hose, 50 feet (15 meters) long		6.6		
		539000-45	High pressure Hose, 75 feet (23 meters) long		8.6		
		531200-45	High pressure Hose, 100 feet (30 meters) long		11.0		
5	Hose Reel Spec SR-02	Hose Reel	<i>Hose Reel, stainless steel, connects to machine or Remote Panel. Any hose length except 100 feet (30 meters).</i>				
		592117-45	Reel with Hose, 30 feet (9 meters) long		19.2		
		592115-45	Reel with Hose, 50 feet (15 meters) long		21.4		
		592118-45	Reel with Hose, 75 feet (23 meters) long		23.9		
6	Other Hose Accessories	512051-45	Hose Hanger, stainless, wall mount.		1.3		
7	Spray Gun Assembly	Spray Gun Assembly	<i>Commercial gun, 1/4" stainless wand, adjustable nozzle for hi/low pressure and stream/spray. Write in preferred length. Distributor completes Part Number</i>				
		592 -45	_____ Hertz, _____ psi (_____ bar), _____ inches (_____ cm) long		2.9		
8	Sill Faucet	Sill Faucet	<i>3/4" Garden Hose thread outlet, single temperature faucets.</i>				
		B-0702	1/2" IPS female inlet, 4 arm handle		2.0		
		B-0704	1/2" IPS male inlet, 4 arm handle		2.0		
		B-0730-POL	1/2" IPS female inlet, loose key handle		3.0		
9	General Machine Accessories Spec SRW	General Machine Accessories					
		525295-45	Wire, 250 feet (76 meters), 12 conductor, 18 AWG color coded. Connect Master Control Panel to Remote Panels, series or parallel		37.6		
		541400-45	Stainless welded Tubing, 50 feet (15 meters), 3/8" (9.5mm) OD. Connects Machine Manifold to Remote Panels, series or parallel.		5.3		
		500006-45	45 degree Flaring Tool, 3/16" to 5/8" (5mm to 16mm) stainless tubing.		2.3		
		512035-45	Spacer Block, to run tubing and wire outside wall in conduit. One for Machine Manifold and for each Remote Panel.		0.6		
		541255-45	Pack, 15 tubing Clamps, 15 wire Ties, for 50 feet (15 meters) of Tubing.		0.7		
		Flare Fittings	<i>Flare fittings for 3/8" (9.5mm) tubing, with flare nuts.</i>				
		538785-45	Union flare fitting, connect straight tubing		0.2		
		538775-45	Tee flare fitting, tee tubing down to Manifold or Remote Panel		0.3		
		539015-45	Elbow flare fitting, turn tubing down to Manifold or Remote Panel		0.2		
System Totals Add all Total Weight Values							

Options

High Pressure Spray Hose



1/4" brass Quick-Disconnect Sockets at both ends, 5/16" (7.9mm) diameter hose, yellow, non-marking, with bend guards.

30' (9m)
50' (15m)
75' (23m)
100' (30m)

Part No:
533600-45
536000-45
539000-45
531200-45

Manual Hose Reel



75' (23m) maximum reel capacity. Commercial quality stainless steel construction guarantees long life, easy maintenance. Mounts to wall at Remote Panel.

30' (9m)
50' (15m)
75' (23m)

Part No:
592117-45
592115-45
592118-45

Spray Gun with Wand and Nozzle



1/4" stainless steel prevents bends. Heat absorbing, ergonomic grip, adjustable nozzle for low/high pressure and stream/spray.

		600 PSI (69 bar) Machine	800 PSI (69 bar) Machine	1000 PSI (69 bar) Machine
		Nozzle Size 7.0	Nozzle Size 6.5	Nozzle Size 5.5
60 Hz Machine	12" (30.2cm)	592287-45	592286-45	592285-45
	24" (61cm)	592284-45	592283-45	592282-45
	36" (91cm)	592290-45	592289-45	592288-45
	60" (152cm)	592293-45	592292-45	592291-45
50 Hz Machine	12" (30.2cm)	592316-45	592315-45	592314-45
	24" (61cm)	592319-45	592318-45	592317-45
	36" (91cm)	592322-45	592321-45	592320-45
	60" (152cm)	592325-45	592324-45	592323-45

Wall Bracket



Stainless steel wall mount hanger keeps hose neat at Remote stations.

Part No: 512051-45

Spacer Block



Allows tubing and wire to run outside the wall in conduit. One for each Remote panel, plus one more for the Manifold at the machine.

Part No: 512035-45

Master Distributors

USA & Canada

Market Equipment & Repair
7300 Quimby St. Paramount, CA 90733. USA
Tel: +1 562 529 5494 Fax: +1 562 529 5310
Email: nick@marketequipmentrepair.com
Web: www.marketequipmentrepair.com

United Kingdom

Sage Sanitizing Systems
Unit 4, Cheney Manor Industrial Estate, Swindon, Wiltshire, SN2 2UD. ENGLAND.
Tel: +(0)1793 603487 Fax: +44 (0)1793 603489
Email: sagesales@sagesanitizingsystems.com
Web: www.sagesanitizingsystems.com

Sage Systems™

HIGH PRESSURE SANITIZING SYSTEMS

Worldwide Manufacturing Facility

Sage Sanitizing Systems
Unit 4, Cheney Manor Industrial Estate
Swindon, Wiltshire, England SN2 2UD
Tel: + (0)1793 603487 Fax: + 44 (0)1793 603489
Email: sagesales@sagesanitizingsystems.com
**/eb: www.sagesanitizingsystems.com

Master Distributors

Middle East

D & S Exports Inc
24 Broad Street, Norwalk, CT 06851. USA
Tel: +1 203 847 6446 Fax: +1 203 849 9526
Email: s.straut@dsusa.net
Web: www.dsusa.net

South Asia and Pacific Rim

D & S Exports Pure Support SDN BHD
29-6 Block F2, Jalan PJU 1/42A, Dataran Prima,
47301 Petaling Jaya, Selangor Darul Ehsan, MALAYSIA
Tel: 603 7880 5758 Fax: 603 7880 5760
Email: puresup@dsusa.net
Web: www.dsusa.net

Sage™ Systems

HIGH PRESSURE SANITIZING SYSTEMS



Construction:

Stainless steel frame, bracket, structure, and hardware.

Stainless Float tank with 1" air gap to prevent backflow.

Leeson commercial electric motor with manual reset thermal overload protection.

6 foot (1.8m) water inlet hose, with 3/4" garden hose thread.

Cat Triplex plunger pump.

Vacuum formed ABS cover.

All fluid handling components are brass, stainless, or high pressure hose.

Light 5/16" dia Spray hose, bright yellow, non-marking, with flex guards and 1/4" brass Quick Disconnect sockets at each end.

Ergonomic spray gun with stainless wand, heat insulating grip, and adjustable nozzle for low/high pressure and steam/spray.

Features:

Fully certified and listed as a pressure washer for commercial indoor use.

In-line water filter protects machine from debris.

Adjustable Unloader valve allows the unit to idle and recirculate when the spray gun is closed.

Pressure Relief Valve maintains a safe maximum pressure.

Thermal Relief Valve prevents recirculated water from overheating while idling by discharging 100ml of heated water and replacing it with cool water. Discharge occurs at 165°F.

Timeout function prevents pump or motor wear by shutting power off after machine idles and recirculates for 5 minutes. Machine power is easily reset at either the machine or the remote station

AutoChem Feature:

Automatically switch from chemical To rinse at spray gun, by switching The nozzle from low to high pressure.

Note: Chemicals are ONLY applied at low pressure (about 1/10 of machine maximum rated pressure).

Item: _____

Project: _____

Product: Sage Central System

Model: SRW- _____ - _____ - _____

06	0	1	03	N
08	1	2	05	R
10	2	3	07	
	3		10	

1. Pick a Pressure

- 06 = 600 psi (41 bar) maximum
- 08 = 800 psi (55 bar) maximum
- 10 = 1000 psi (69 bar) maximum

2. Pick a Chemical Injection Method

- 0 = Soap and Sanitize, Gravity fed (solenoid)
- 1 = Soap and Sanitize, Pump fed (peristaltic)
- 2 = Soap only, Gravity fed (solenoid)
- 3 = Soap only, Pump fed (peristaltic)

3. Pick a Power Supply

- 1 = 115 Volt, 60 Hertz
- 2 = 230 Volt, 50 Hertz
- 3 = 230 Volt, 60 Hertz

4. Pick a Hose Length

- 03 = 30 feet (9.1 meters)
- 05 = 50 feet (15.2 meters)
- 07 = 75 feet (22.9 meters)
- 10 = 100 feet (30.5 meters)

5. Optional Suffixes

- N = No other options
- R = Stainless Manual Hose Reel (up to 75' of hose)

Options:

Solenoid Valve

Opens on demand to allow siphon action of pump to pull chemical into system with gravity's help at adjustable mix ratio.

Peristaltic Pump

Pulls chemicals against gravity or over longer distances. Meters chemicals to specific, adjustable mix ratios. (230 Volt machines use a diaphragm pump with similar features).

Manual Hose Reel

Stainless Steel reel for installation at machine or remote station Holds up to 75 feet of hose. Keeps work site neat and organized.

Remember:

Specify the Master Control Panel to match the machine voltage. This panel controls the remote system electronics. Remote Stations specify up to 10 remotes anywhere within 300 feet of the machine. Each remote has power control and chemical selection.

See separate SR- specification sheets for Master Control Panel and Remote Stations.

Specifications

06 Models

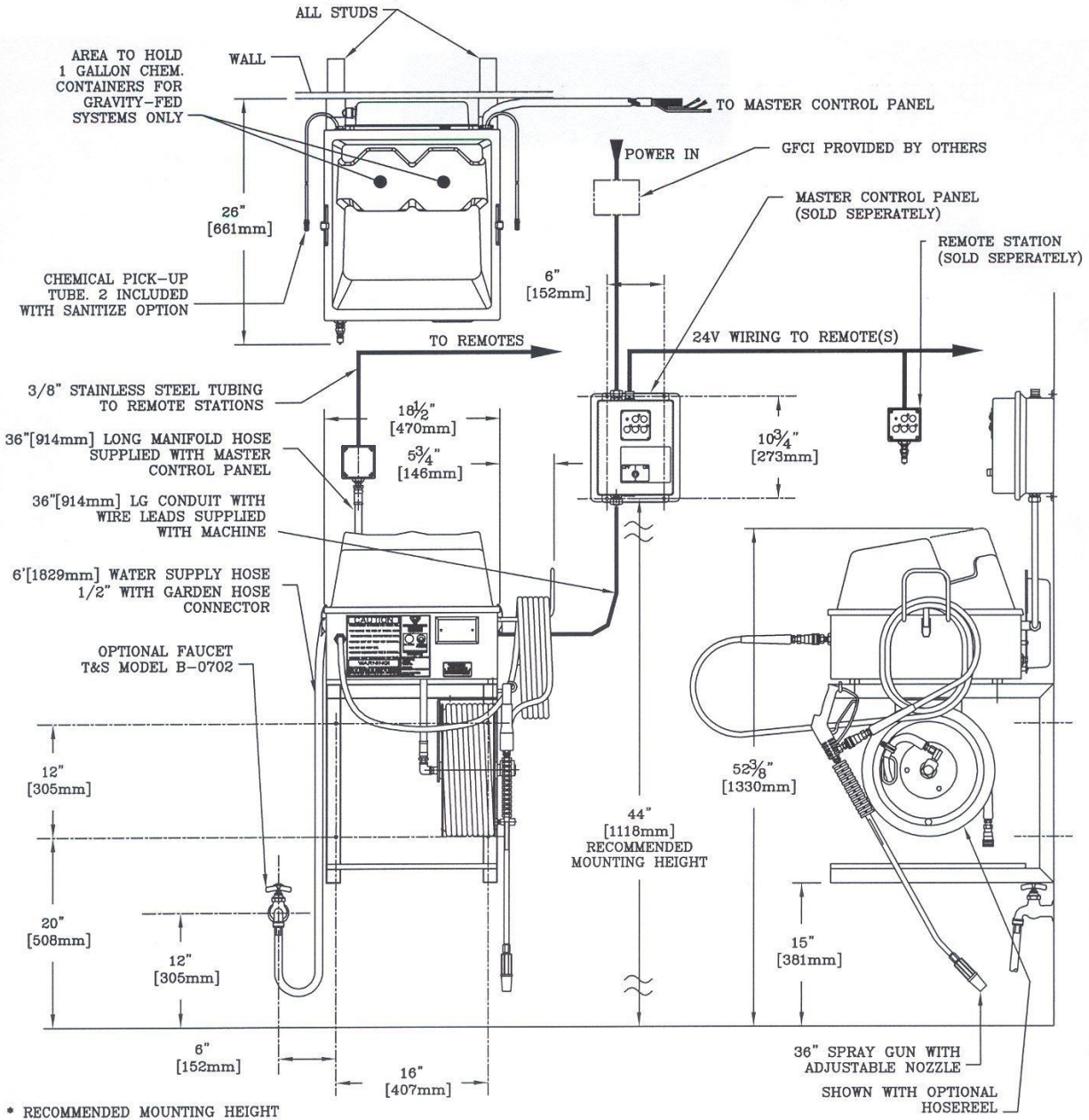
600 PSI (41 bar)
 2.9 gpm (11.0 lpm)
 1.5 HP motor
 12 AMPS @ 115 Volts

08 Models

800 PSI (55 bar)
 2.9 gpm (11.0 lpm)
 2.0 HP motor
 15 AMPS @ 115 Volts

10 Models

1000 PSI (69 bar)
 2.9 gpm (11.0 lpm)
 2.0 HP motor
 18 AMPS @ 115 Volts



Master Distributors

USA & Canada

Market Equipment & Repair
 7300 Quimby St. Paramount, CA 90733. USA
 Tel: +1 562 529 5494 Fax: +1 562 529 5310
 Email: nick@marketequipmentrepair.com
 Web: www.marketequipmentrepair.com

United Kingdom

Sage Sanitizing Systems
 Unit 4, Cheney Manor Industrial Estate
 Swindon, Wiltshire, England SN2 2UD
 Tel: + (0)1793 603487 Fax: + 44 (0)1793 603489
 Email: sagesales@sagesanitizingsystems.com
 Web: www.sagesanitizingsystems.com

Sage™ Systems

HIGH PRESSURE SANITIZING SYSTEMS

Worldwide Manufacturing Facility

Sage Sanitizing Systems
 Unit 4, Cheney Manor Industrial Estate
 Swindon, Wiltshire, England SN2 2UD
 Tel: + (0)1793 603487 Fax: + 44 (0)1793 603489
 Email: sagesales@sagesanitizingsystems.com
 Web: www.sagesanitizingsystems.com

Master Distributors

Middle East

D & S Exports Inc
 24 Broad Street, Norwalk, CT 06851. USA
 Tel: +1 203 847 6446 Fax: +1 203 849 9526
 Email: s.straut@dsusa.net
 Web: www.dsusa.net

South Asia and Pacific Rim

D & S Exports Pure Support SDN BHD
 29-6 Block F2, Jalan PJU 1/42A, Dataran Prima,
 47301 Petaling Jaya, Selangor Darul Ehsan, MALAYSIA
 Tel: 603 7880 5758 Fax: 603 7880 5760
 Email: puresup@dsusa.net
 Web: www.dsusa.net

Sage™ Systems

HIGH PRESSURE SANITIZING SYSTEMS



Item: _____
Project: _____
Product: Sage Master Control Panel
Model: SR-010 _____ - _____

1	N
2	L

1. Pick a Power Supply

- 1 = 115 Volt.
- 2 = 230 Volt.

2. Optional Suffixes

- N = No other options
- L = Key Lock Master Switch.

Features:

Powers machine motor and transforms incoming power to 24 V for Remote network and chemical Valve/Pump.

Time out function prevents pump or motor wear by shutting power off after machine idles and recirculates for five minutes. Machine power is easily reset at either the Master Control Panel or at Remote Panel.

Fully certified and listed.

Three holes into case for incoming power, machine power, and remote network power and control.

Screw terminal blocks inside case for fast and secure wiring connections.

Incoming Power

GFCl required but not supplied. 30 AMP recommended.

20 AMP dedicated line.

Machine Power

Power Cord and conduit for connection to the machine are supplied with the machine.

Controls

System controls and powers the entire Remote network.

Supports up to 10 remote stations, one at a time.

Five touch pad buttons to control machine power ON/OFF and SOAP/RINSE/SANITIZE.

Five LED's indicate machine power status and chemical mode.

Construction:

Fiberglass reinforced plastic housing, gasket sealed.

NEMA rated for moisture.

Mounting hardware not supplied.

Stainless steel hinges.

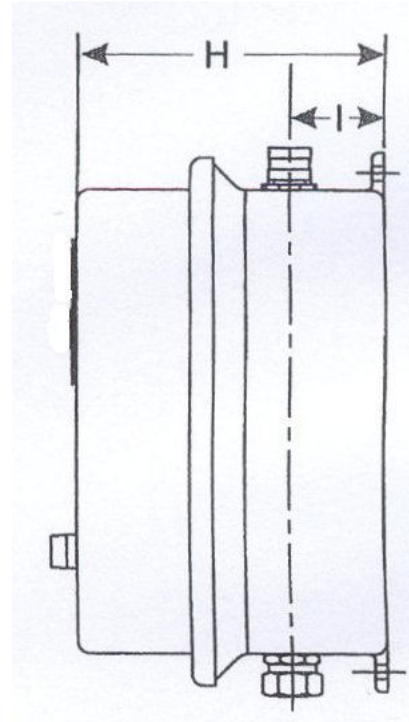
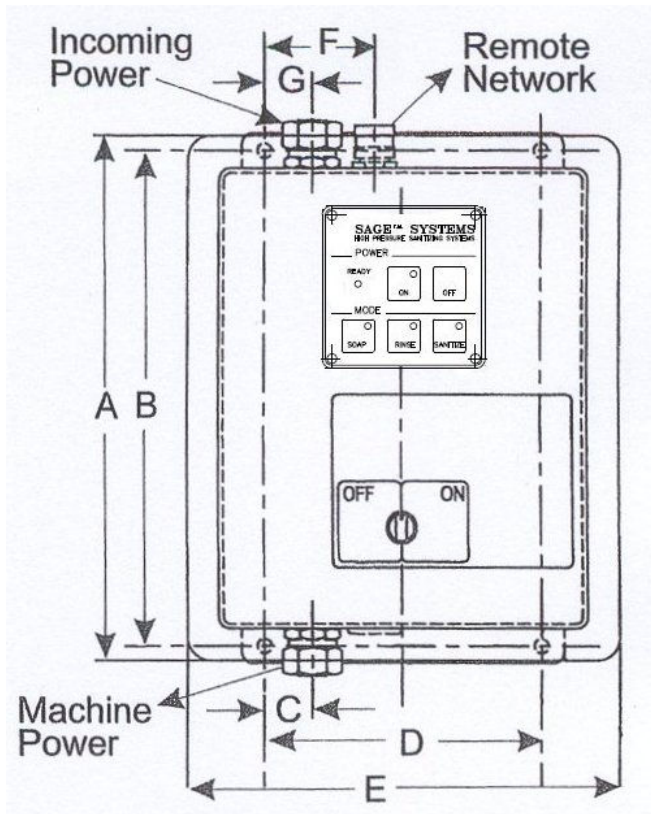
Five touch pad buttons with a polyester overlay and a projected cycle of 1,000,000 actuations.

Options:

Key Lock Master Power

Keyed Master Power Switch allows only authorized personnel to ready machine and system for operation from Master Control Panel or any Remote Panel.

Specifications



Dimensions:

Elevation	In	Cm
A	11.6	29.5
B	10.8	27.4
C	1.0	2.5
D	6.0	15.2
E	9.4	23.5
F	2.4	6.1
G	1.0	2.5
Side		
H	6.5	16.5
I	2.0	5.1



Master Distributors

USA & Canada

Market Equipment & Repair
7300 Quimby St. Paramount, CA 90733. USA
Tel: +1 562 529 5494 Fax: + 1 562 529 5310
Email: nick@marketequipmentrepair.com
Web: www.marketequipmentrepair.com

United Kingdom

Sage Sanitizing Systems
Unit 4, Cheney Manor Industrial Estate
Swindon, Wiltshire, England SN2 2UD
Tel: + (0)1793 603487 Fax: + 44 (0)1793 603489
Email: sagesales@sagesanitizingsystems.com
Web: www.sagesanitizingsystems.com



Worldwide Manufacturing Facility

Sage Sanitizing Systems
Unit 4, Cheney Manor Industrial Estate
Swindon, Wiltshire, England SN2 2UD
Tel: + (0)1793 603487 Fax: + 44 (0)1793 603489
Email: sagesales@sagesanitizingsystems.com
Web: www.sagesanitizingsystems.com

Master Distributors

Middle East

D & S Exports Inc
24 Broad Street, Norwalk, CT 06851. USA
Tel: +1 203 847 6446 Fax: + 1 203 849 9526
Email: s.straut@dsusa.net
Web: www.dsusa.net

South Asia and Pacific Rim

D & S Exports Pure Support SDN BHD
29-6 Block F2, Jalan PJU 1/42A, Dataran Prima,
47301 Petaling Jaya, Selangor Darul Ehsan, MALAYSIA
Tel: 603 7880 5758 Fax: 603 7880 5760
Email: puresup@dsusa.net
Web: www.dsusa.net

Sage™ Systems

HIGH PRESSURE SANITIZING SYSTEMS



Item: _____
 Project: _____
 Product: Sage Remote panel, Exposed
 Model: SR-020 ____ - ____

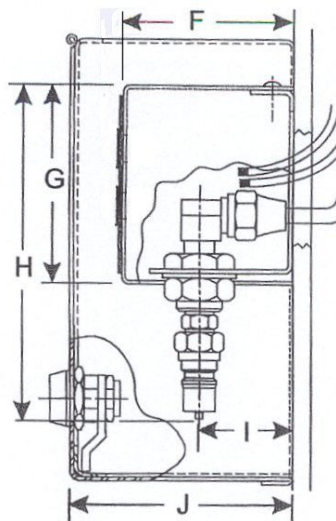
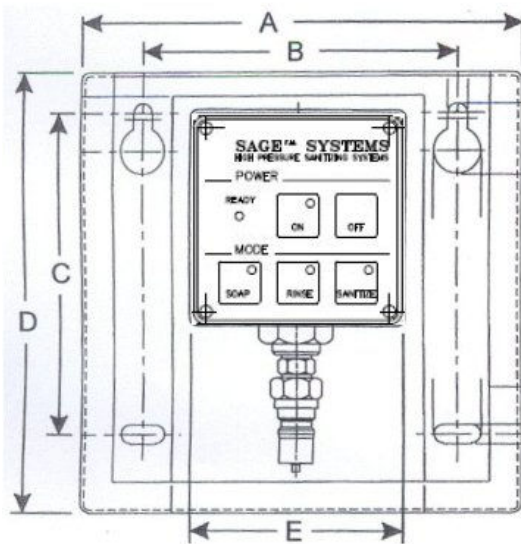
1	
2	L

1. Pick a Style

- 1 = Exposed wall mount panel.
- 2-L = Exposed wall mount panel, with locking stainless steel Security Cover

Pictured: The Sage SR-0201 Remote Panel.

Dimensioned: The Sage SR-0202-L Remote Panel with Cover (cover removed).



Dimensions:

Elevation	In	Cm
A	7.0	17.8
B	5.0	12.7
C	5.0	12.7
D	7.0	17.8
E	3.5	8.9
Side		
F	3.5	8.9
G	3.5	8.9
H	6.0	15.2
I	1.5	3.8
J	3.5	8.9

Features:

- Fully certified and listed.
- Four internal screw slots for easy alignment of the box. Mounting hardware not provided.
- Stainless steel box.
- Brass fittings convert flared remote network tubing into 1/4" Quick-Disconnect plug, ready for High Pressure Hose connection.
- Five touch pad buttons select machine power and chemical mode. Polyester overlay with a projected cycle of 1,000,000 actuations.
- Five LED's indicate machine power status and mode.

Options:

Remote Cover.

- Stainless steel box with key access protects and Secures Remote Panel.
- Recommended for exterior or vandal-prone areas.



Part No: 592294-45

Accessories

High Pressure Spray Hose



1/4" brass Quick-Disconnect Sockets at both ends, 5/16" (7.9mm) diameter hose, yellow, non-marking, with bend guards.

30' (9m)	533600-45
50' (15m)	536000-45
75' (23m)	539000-45
100' (30m)	531200-45

Part No:

Manual Hose Reel



75' (23m) maximum reel capacity. Commercial quality stainless steel construction guarantees long life, easy maintenance. Mounts to wall at Remote Panel.

30' (9m)	592117-45
50' (15m)	592115-45
75' (23m)	592118-45

Part No:

Spray Gun with Wand and Nozzle



1/4" stainless steel prevents bends. Heat absorbing, ergonomic grip, adjustable nozzle for low/high pressure and stream/spray.

		600 PSI (69 bar) Machine	800 PSI (69 bar) Machine	1000 PSI (69 bar) Machine
		Nozzle Size 7.0	Nozzle Size 6.5	Nozzle Size 5.5
60 Hz Machine	12" (30.2cm)	592287-45	592286-45	592285-45
	24" (61cm)	592284-45	592283-45	592282-45
	36" (91cm)	592290-45	592289-45	592288-45
	60" (152cm)	592293-45	592292-45	592291-45
		Nozzle Size 4.5	Nozzle Size 4.0	Nozzle Size 3.5
50 Hz Machine	12" (30.2cm)	592316-45	592315-45	592314-45
	24" (61cm)	592319-45	592318-45	592317-45
	36" (91cm)	592322-45	592321-45	592320-45
	60" (152cm)	592325-45	592324-45	592323-45

Wall Bracket



Stainless steel wall mount hanger keeps hose neat at Remote stations.

Part No: 512051-45

Spacer Block



Allows tubing and wire to run outside the wall in conduit. One for each Remote panel, plus one more for the Manifold at the machine.

Part No: 512035-45

Master Distributors

USA & Canada

Market Equipment & Repair
7300 Quimby St. Paramount, CA 90733. USA
Tel: +1 562 529 5494 Fax: + 1 562 529 5310
Email: nick@marketequipmentrepair.com
Web: www.marketequipmentrepair.com

United Kingdom

Sage Sanitizing Systems
Unit 4, Cheney Manor Industrial Estate
Swindon, Wiltshire, England SN2 2UD
Tel: + (0)1793 603487 Fax: + 44 (0)1793 603489
Email: sagesales@sagesanitizingsystems.com
Web: www.sagesanitizingsystems.com



Worldwide Manufacturing Facility

Sage Sanitizing Systems
Unit 4, Cheney Manor Industrial Estate
Swindon, Wiltshire, England SN2 2UD
Tel: + (0)1793 603487 Fax: + 44 (0)1793 603489
Email: sagesales@sagesanitizingsystems.com
Web: www.sagesanitizingsystems.com

Master Distributors

Middle East

D & S Exports Inc
24 Broad Street, Norwalk, CT 06851. USA
Tel: +1 203 847 6446 Fax: + 1 203 849 9526
Email: s.straut@dsusa.net
Web: www.dsusa.net

South Asia and Pacific Rim

D & S Exports Pure Support SDN BHD
29-6 Block F2, Jalan PJJU 1/42A, Dataran Prima,
47301 Petaling Jaya, Selangor Darul Ehsan, MALAYSIA
Tel: 603 7880 5758 Fax: 603 7880 5760
Email: puresup@dsusa.net
Web: www.dsusa.net

Sage™ Systems

HIGH PRESSURE SANITIZING SYSTEMS



Item: _____

Project: _____

Product: Sage Mobile

Model: SM- _____ - _____ - _____

06	0	1	03	N
08	1	2	05	R
10	2	3	07	
	3		10	

1. Pick a Pressure

- 06 = 600 psi (41 bar) maximum
- 08 = 800 psi (55 bar) maximum
- 10 = 1000 psi (69 bar) maximum

2. Pick a Chemical Injection Method

- 0 = Soap and Sanitize, Gravity fed (solenoid)
- 1 = Soap and Sanitize, Pump fed (peristaltic)
- 2 = Soap only, Gravity fed (solenoid)
- 3 = Soap only, Pump fed (peristaltic)

3. Pick a Power Supply

- 1 = 115 Volt, 60 Hertz
- 2 = 230 Volt, 50 Hertz
- 3 = 230 Volt, 60 Hertz

4. Pick a Hose Length

- 03 = 30 feet (9.1 meters)
- 05 = 50 feet (15.2 meters)
- 07 = 75 feet (22.9 meters)
- 10 = 100 feet (30.5 meters)

5. Optional Suffixes

- N = No other options
- R = Stainless Manual Hose Reel (up to 75' of hose)

Construction:

- Stainless steel cart, handle, structure, and hardware.
- Full locking commercial front casters.
- Stainless Float tank with 1" air gap to prevent backflow.
- Leeson commercial electric motor with manual reset thermal overload protection.
- 35 foot (10.7m) power cord with GFCI and plug.
- 6 foot (1.8m) water inlet hose, with 3/4" garden hose thread.
- Cat Triplex plunger pump.
- Vacuum formed ABS cover.
- All fluid handling components are brass, stainless, or high pressure hose.
- Light 5/16" dia Spray hose, bright yellow, non-marking, with flex guards and 1/4" brass Quick Disconnect sockets at each end.
- Ergonomic spray gun with stainless wand, heat insulating grip, and adjustable nozzle for low/high pressure and steam/spray.

Features:

- Fully certified and listed as a pressure washer for commercial indoor use.
- In-line water filter protects machine from debris.
- Adjustable Unloader valve allows the unit to idle and recirculate when the spray gun is closed.
- Pressure Relief Valve maintains a safe maximum pressure.
- Thermal Relief Valve prevents recirculated water from overheating while idling by discharging 100ml of heated water and replacing it with cool water. Discharge occurs at 165°F.

AutoChem Feature:

- Automatically switch from chemical To rinse at spray gun, by switching The nozzle from low to high pressure.
- Note: Chemicals are ONLY applied at low pressure (about 1/10 of machine maximum rated pressure).

Options:

Solenoid Valve

Opens on demand to allow siphon action of pump to pull chemical into system with gravity's help at adjustable mix ratio.

Peristaltic Pump

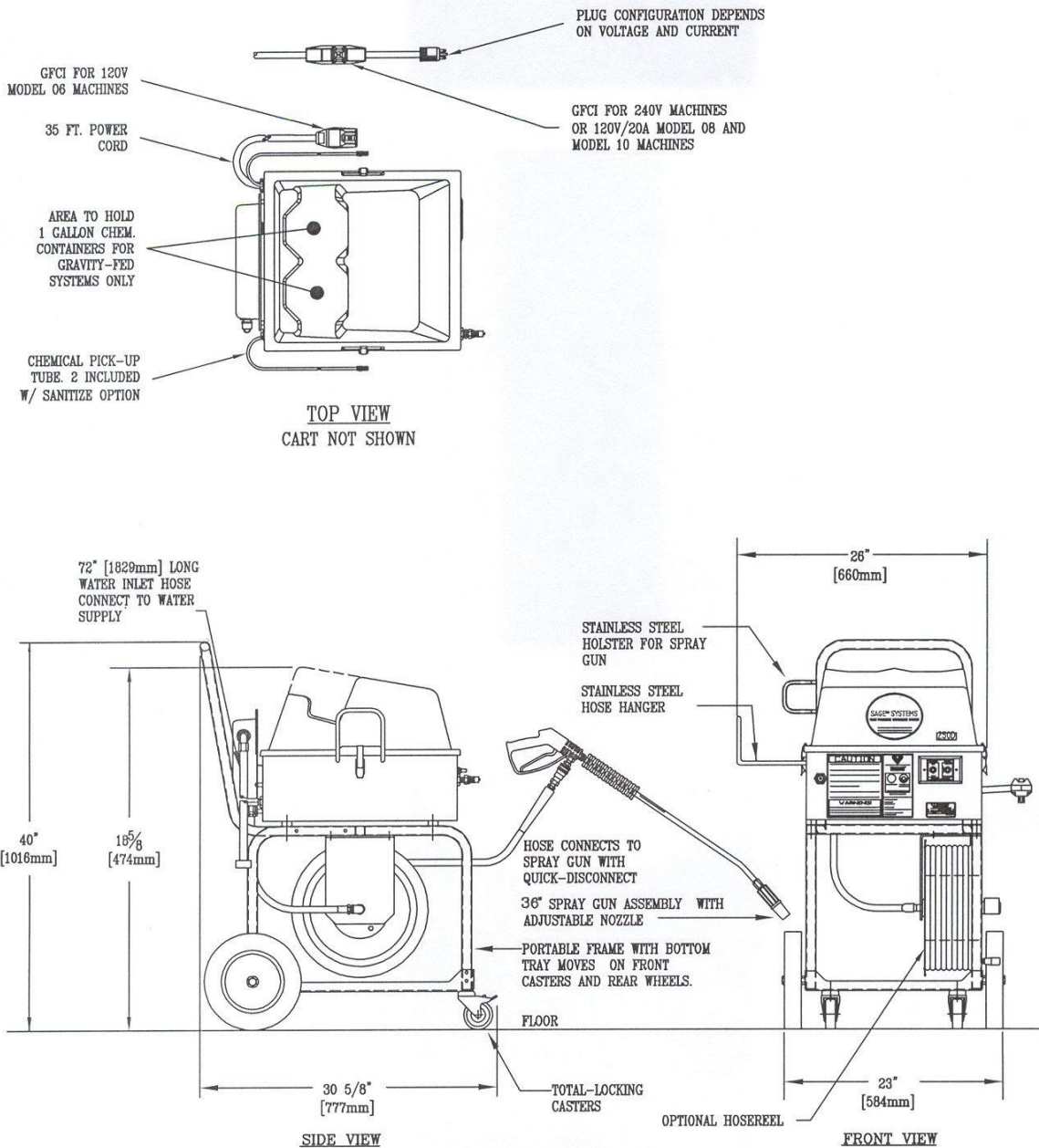
Pulls chemicals against gravity or over longer distances. Meters chemicals to specific, adjustable mix ratios. (230 Volt machines use a diaphragm pump with similar features).

Manual Hose Reel

Stainless Steel reel for installation at machine or remote station Holds up to 75 feet of hose. Keeps work site neat and organized.

Specifications

06 Models	08 Models	10 Models
600 PSI (41 bar)	800 PSI (55 bar)	1000 PSI (69 bar)
2.9 gpm (11.0 lpm)	2.9 gpm (11.0 lpm)	2.9 gpm (11.0 lpm)
1.5 HP motor	2.0 HP motor	2.0 HP motor
12 AMPS @ 115 Volts	15 AMPS @ 115 Volts	18 AMPS @ 115 Volts



Master Distributors

USA & Canada

Market Equipment & Repair
7300 Quimby St. Paramount, CA 90733. USA
Tel: +1 562 529 5494 Fax: + 1 562 529 5310
Email: nick@marketequipmentrepair.com
Web: www.marketequipmentrepair.com

United Kingdom

Sage Sanitizing Systems
Unit 4, Cheney Manor Industrial Estate
Swindon, Wiltshire, England SN2 2UD
Tel: + (0)1793 603487 Fax: + 44 (0)1793 603489
Email: sagesales@sagesanitizingsystems.com
Web: www.sagesanitizingsystems.com



Worldwide Manufacturing Facility

Sage Sanitizing Systems
Unit 4, Cheney Manor Industrial Estate
Swindon, Wiltshire, England SN2 2UD
Tel: + (0)1793 603487 Fax: + 44 (0)1793 603489
Email: sagesales@sagesanitizingsystems.com
Web: www.sagesanitizingsystems.com

Master Distributors

Middle East

D & S Exports Inc
24 Broad Street, Norwalk, CT 06851. USA
Tel: +1 203 847 6446 Fax: + 1 203 849 9526
Email: s.straut@dsusa.net
Web: www.dsusa.net

South Asia and Pacific Rim

D & S Exports Pure Support SDN BHD
29-6 Block F2, Jalan PJJ 1/42A, Dataran Prima,
47301 Petaling Jaya, Selangor Darul Ehsan, MALAYSIA
Tel: 603 7880 5758 Fax: 603 7880 5760
Email: puresup@dsusa.net
Web: www.dsusa.net

Sage™ Systems

HIGH PRESSURE SANITIZING SYSTEMS



Construction:

Stainless steel frame, bracket, structure, and hardware.

Stainless Float tank with 1" air gap to prevent backflow.

Leeson commercial electric motor with manual reset thermal overload protection.

35 foot (10.7m) power cord with GFCI and plug.

6 foot (1.8m) water inlet hose, with 3/4" garden hose thread.

Cat Triplex plunger pump.

Vacuum formed ABS cover.

All fluid handling components are brass, stainless, or high pressure hose.

Light 5/16" dia Spray hose, bright yellow, non-marking, with flex guards and 1/4" brass Quick Disconnect sockets at each end.

Ergonomic spray gun with stainless wand, heat insulating grip, and adjustable nozzle for low/high pressure and steam/spray.

Features:

Fully certified and listed as a pressure washer for commercial indoor use.

In-line water filter protects machine from debris.

Adjustable Unloader valve allows the unit to idle and recirculate when the spray gun is closed.

Pressure Relief Valve maintains a safe maximum pressure.

Thermal Relief Valve prevents recirculated water from overheating while idling by discharging 100ml of heated water and replacing it with cool water. Discharge occurs at 165°F.

AutoChem Feature:

Automatically switch from chemical To rinse at spray gun, by switching The nozzle from low to high pressure.

Note: Chemicals are ONLY applied at low pressure (about 1/10 of machine maximum rated pressure).

Item: _____

Project: _____

Product: Sage Wallmount

Model: SW- _____

06	0	1	03	N
08	1	2	05	R
10	2	3	07	
	3		10	

1. Pick a Pressure

06 = 600 psi (41 bar) maximum

08 = 800 psi (55 bar) maximum

10 = 1000 psi (69 bar) maximum

2. Pick a Chemical Injection Method

0 = Soap and Sanitize, Gravity fed (solenoid)

1 = Soap and Sanitize, Pump fed (peristaltic)

2 = Soap only, Gravity fed (solenoid)

3 = Soap only, Pump fed (peristaltic)

3. Pick a Power Supply

1 = 115 Volt, 60 Hertz

2 = 230 Volt, 50 Hertz

3 = 230 Volt, 60 Hertz

4. Pick a Hose Length

03 = 30 feet (9.1 meters)

05 = 50 feet (15.2 meters)

07 = 75 feet (22.9 meters)

10 = 100 feet (30.5 meters)

5. Optional Suffixes

N = No other options

R = Stainless Manual Hose Reel (up to 75' of hose)

Options:

Solenoid Valve

Opens on demand to allow siphon action of pump to pull chemical into system with gravity's help at adjustable mix ratio.

Peristaltic Pump

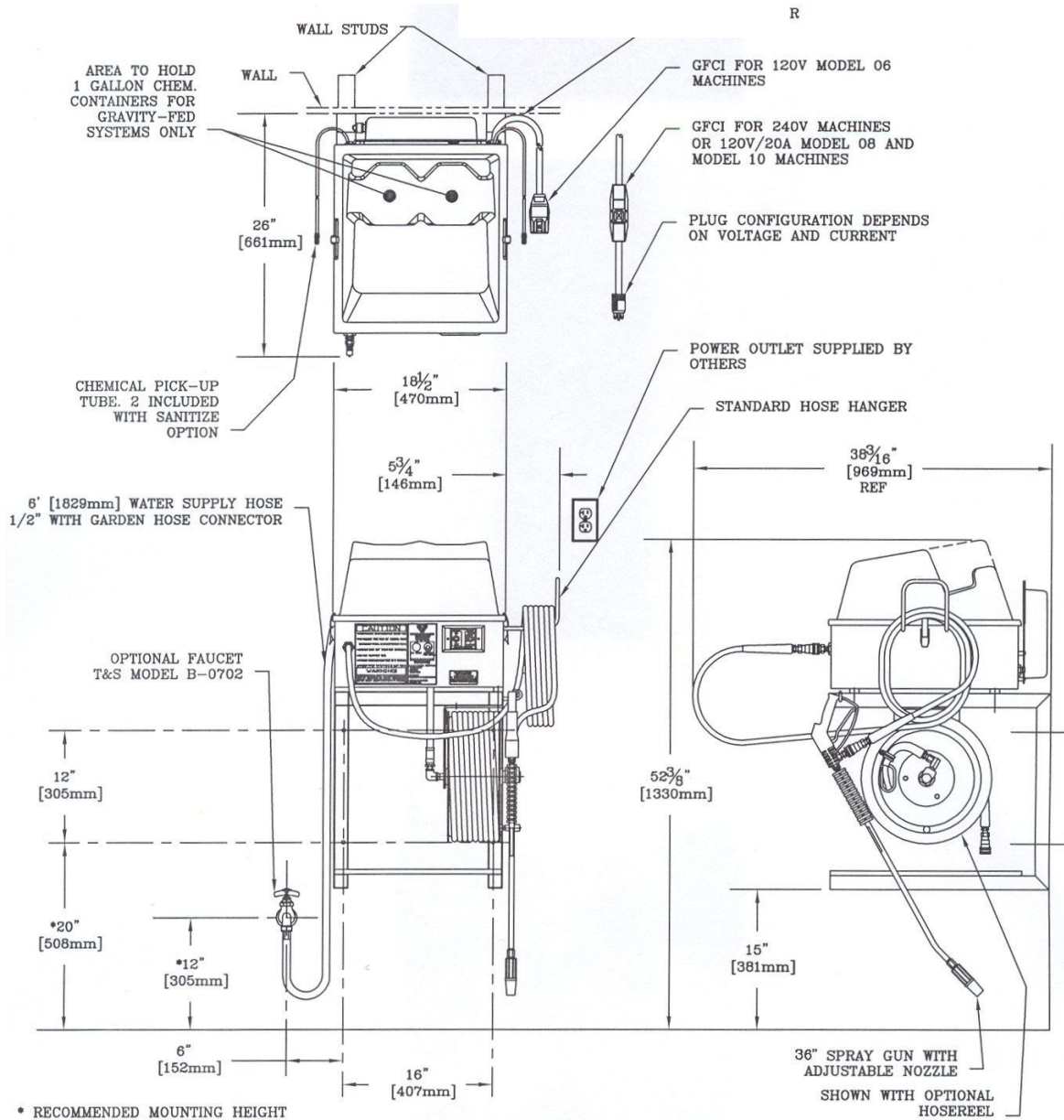
Pulls chemicals against gravity or over longer distances. Meters chemicals to specific, adjustable mix ratios. (230 Volt machines use a diaphragm pump with similar features).

Manual Hose Reel

Stainless Steel reel for installation at machine or remote station Holds up to 75 feet of hose. Keeps work site neat and organized.

Specifications

06 Models	08 Models	10 Models
600 PSI (41 bar)	800 PSI (55 bar)	1000 PSI (69 bar)
2.9 gpm (11.0 lpm)	2.9 gpm (11.0 lpm)	2.9 gpm (11.0 lpm)
1.5 HP motor	2.0 HP motor	2.0 HP motor
12 AMPS @ 115 Volts	15 AMPS @ 115 Volts	18 AMPS @ 115 Volts



Master Distributors

USA & Canada

Market Equipment & Repair
7300 Quimby St. Paramount, CA 90733. USA
Tel: +1 562 529 5494 Fax: + 1 562 529 5310
Email: nick@marketequipmentrepair.com
Web: www.marketequipmentrepair.com

United Kingdom

Sage Sanitizing Systems
Unit 4, Cheney Manor Industrial Estate
Swindon, Wiltshire, England SN2 2UD
Tel: + (0)1793 603487 Fax: + 44 (0)1793 603489
Email: sagesales@sagesanitizingsystems.com
Web: www.sagesanitizingsystems.com

Sage™ Systems

HIGH PRESSURE SANITIZING SYSTEMS

Worldwide Manufacturing Facility

Sage Sanitizing Systems
Unit 4, Cheney Manor Industrial Estate
Swindon, Wiltshire, England SN2 2UD
Tel: + (0)1793 603487 Fax: + 44 (0)1793 603489
Email: sagesales@sagesanitizingsystems.com
Web: www.sagesanitizingsystems.com

Master Distributors

Middle East

D & S Exports Inc
24 Broad Street, Norwalk, CT 06851. USA
Tel: +1 203 847 6446 Fax: + 1 203 849 9526
Email: s.straut@dsusa.net
Web: www.dsusa.net

South Asia and Pacific Rim

D & S Exports Pure Support SDN BHD
29-6 Block F2, Jalan PJU 1/42A, Dataran Prima,
47301 Petaling Jaya, Selangor Darul Ehsan, MALAYSIA
Tel: 603 7880 5758 Fax: 603 7880 5760
Email: puresup@dsusa.net
Web: www.dsusa.net